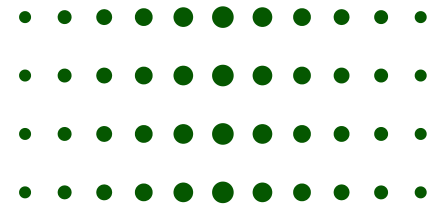
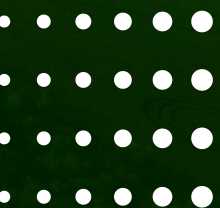


# NETSUITE ENTERPRISE RESOURCE PLANNING (ERP) SYSTEM



ORACLE  
NetSuite

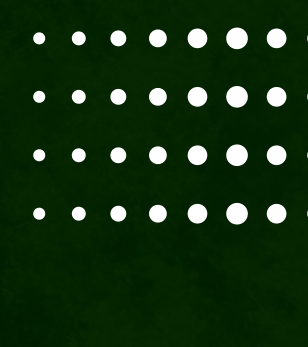






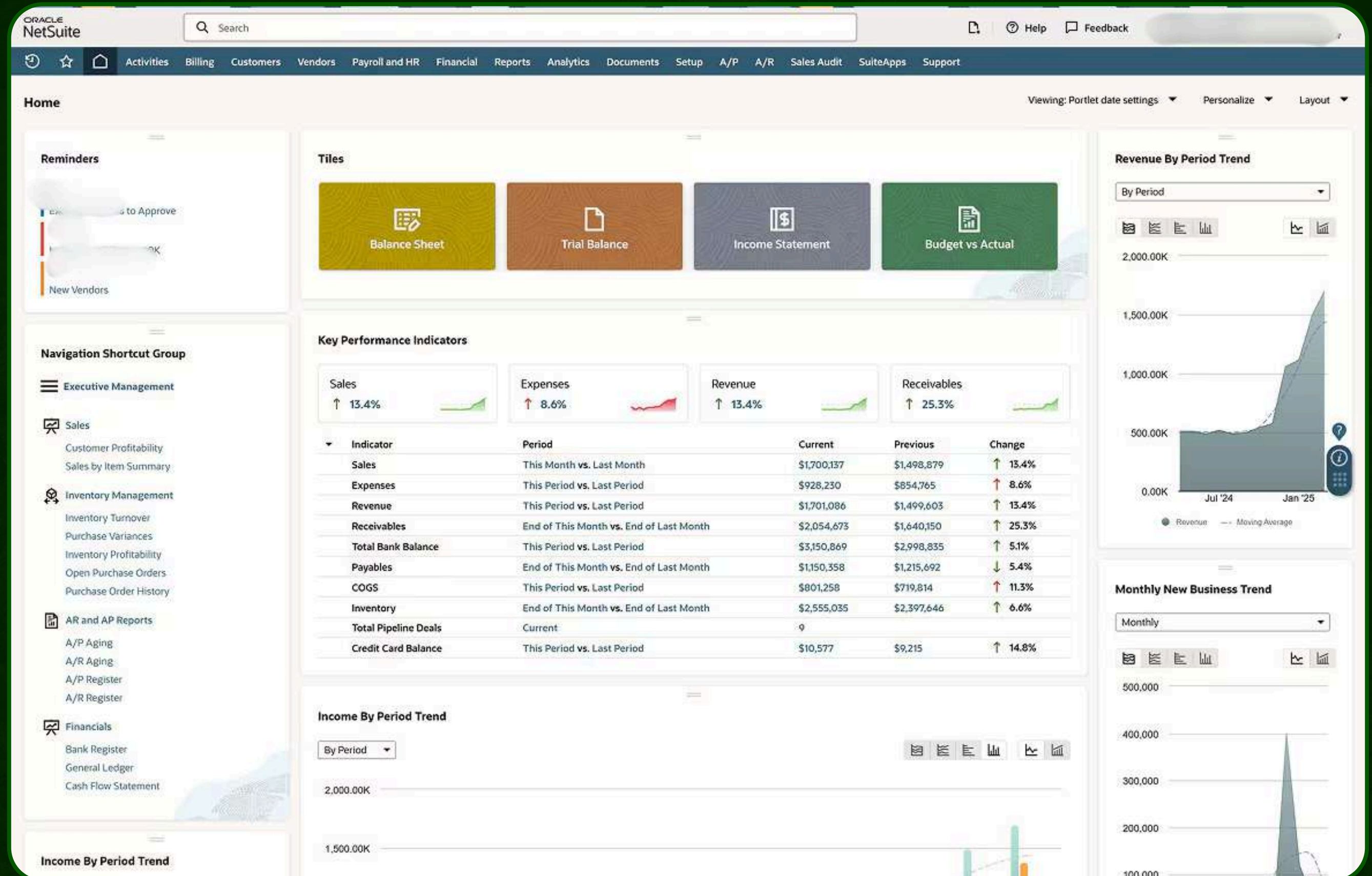
# CLIENT NEED

A global finance team required a long-term Finance Systems Analyst to strengthen their ERP and business systems strategy. Their main challenges were:

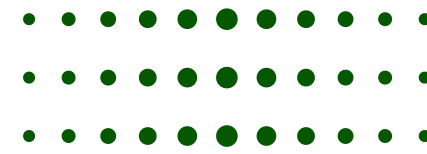
- ✓ **Lack of alignment between finance processes (accounting, FP&A, compliance) and ERP system capabilities.**
  - ✓ **Inaccurate or delayed financial reporting.**
  - ✓ **Inefficient close cycles and manual processes for approvals, reconciliations, and reporting.**
  - ✓ **Gaps in documentation of “as-is” vs “to-be” workflows.**
  - ✓ **Limited ownership of ERP configurations specific to finance.**
- 



# NETSUITE ERP





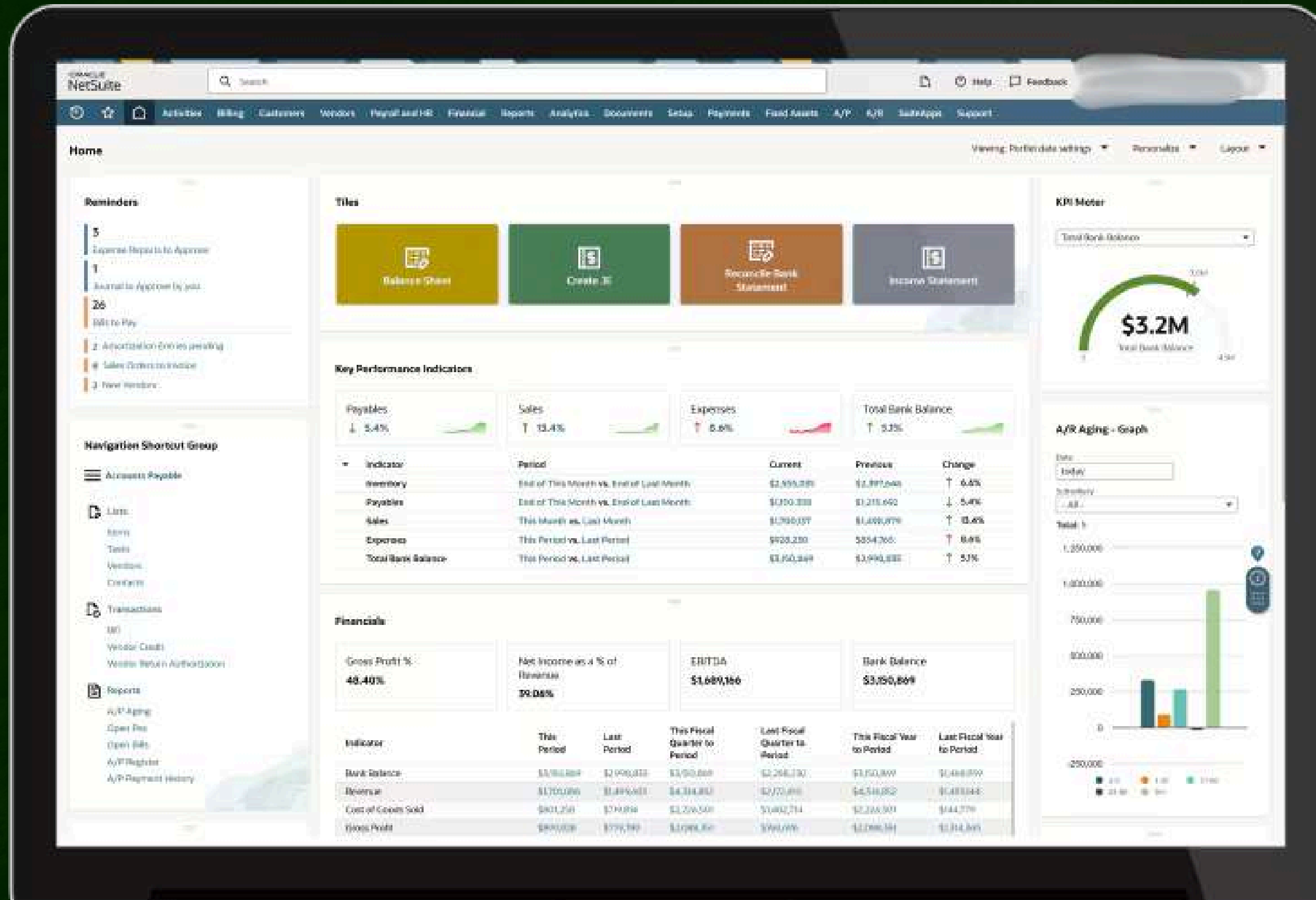


# OBJECTIVES

The client needed a partner who could:

- ✓ Bridge communication between finance stakeholders and technical ERP teams.
- ✓ Configure ERP finance modules (GL, AP, AR, fixed assets, budgeting).
- ✓ Troubleshoot finance-specific issues during close and audit cycles.
- ✓ Support reporting accuracy and integration with payroll, banking, and BI tools.
- ✓ Provide clear process documentation and testing support.

# ACCOUNTING SOFTWARE





# APPROACH

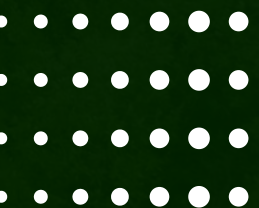
Our team engaged as the Finance Systems Analyst function, taking ownership of finance ERP configuration and process optimization. The steps included:

## 1. Process Discovery & Documentation

- Conducted workshops with accounting, FP&A, and compliance leads.
- Mapped current-state (“as-is”) processes and designed target-state (“to-be”) workflows.

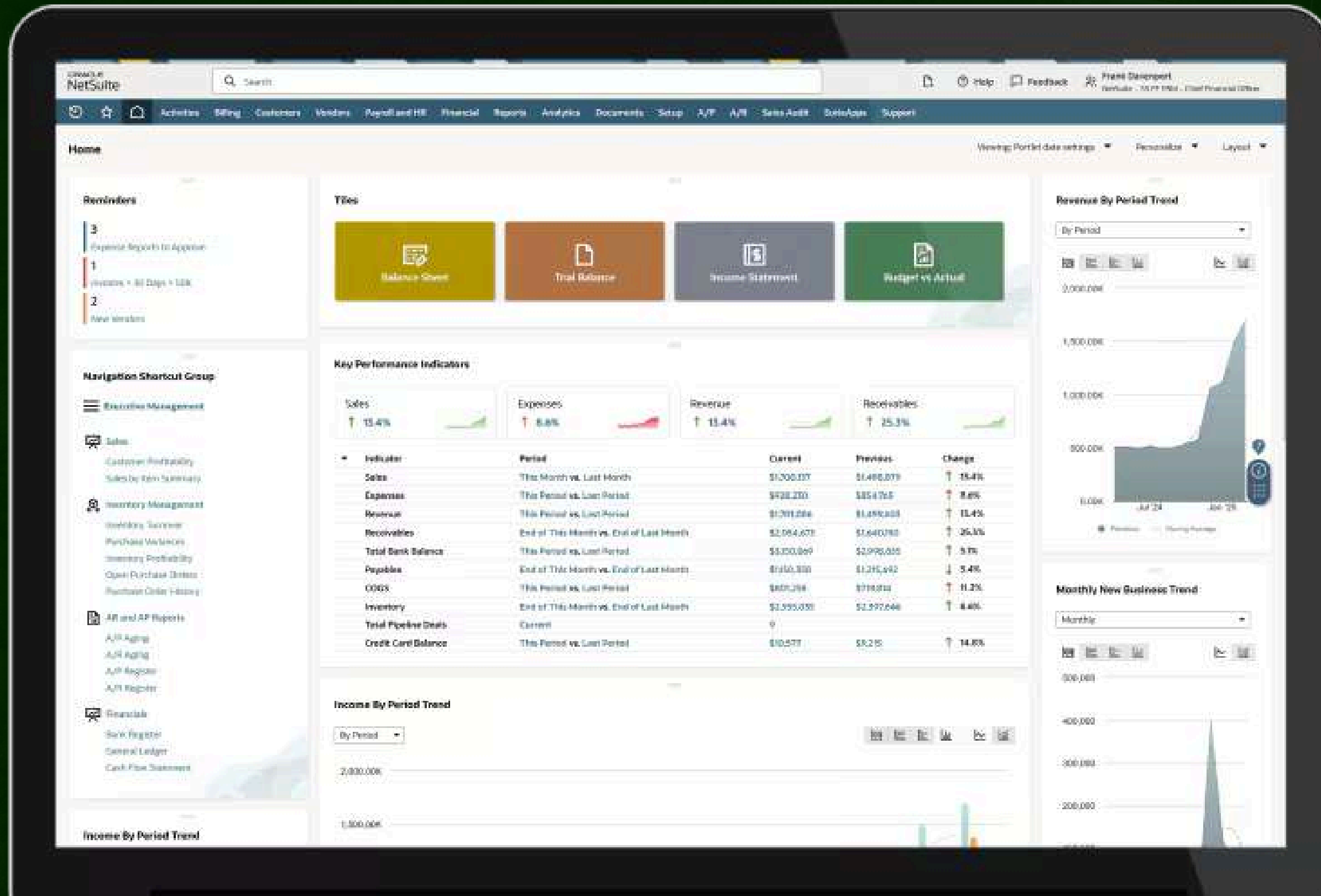
## 2. ERP Finance Configuration

- Re-structured chart of accounts for better reporting clarity.
- Configured approvals, workflows, and reporting dashboards in ERP (NetSuite focus).
- Automated recurring journal entries, reconciliations, and intercompany flows.



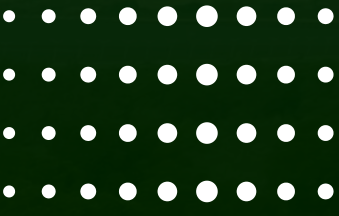


# FINANCIAL MANAGEMENT





# APPROACH



## 3.ERP Finance Configuration

- Re-structured chart of accounts for better reporting clarity.
- Configured approvals, workflows, and reporting dashboards in ERP (NetSuite focus).
- Automated recurring journal entries, reconciliations, and intercompany flows.

## 4.Testing & Validation

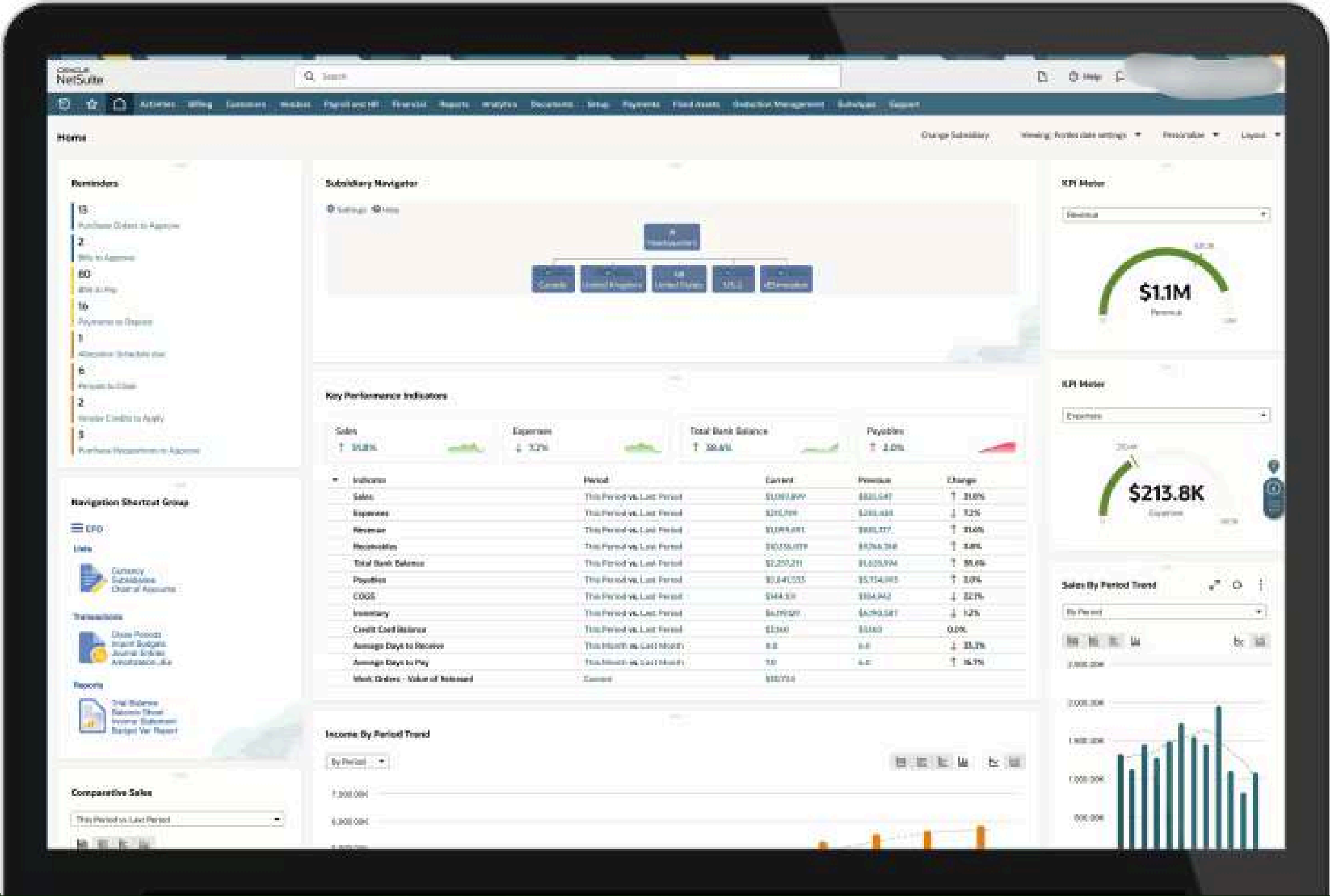
- Designed finance-specific test cases.
- Executed QA and UAT cycles with finance stakeholders.
- Documented traceability of all changes.

## 5.Operational Support

- Supported finance teams during month-end close and external audits.
- Proactively troubleshooted ERP issues and proposed long-term fixes.
- Coordinated with vendors for payroll and banking integrations.



# GLOBAL BUSINESS MANAGEMENT





# RESULTS

- 01** 30% faster month-end close through workflow automation.
- 02** Improved audit readiness with clear process documentation and ERP controls.
- 03** Increased reporting accuracy with better chart of accounts and real-time dashboards.
- 04** Higher finance team efficiency by eliminating manual steps in AP, AR, and fixed assets processes.
- 05** Scalable ERP foundation aligned with GAAP and compliance requirements.

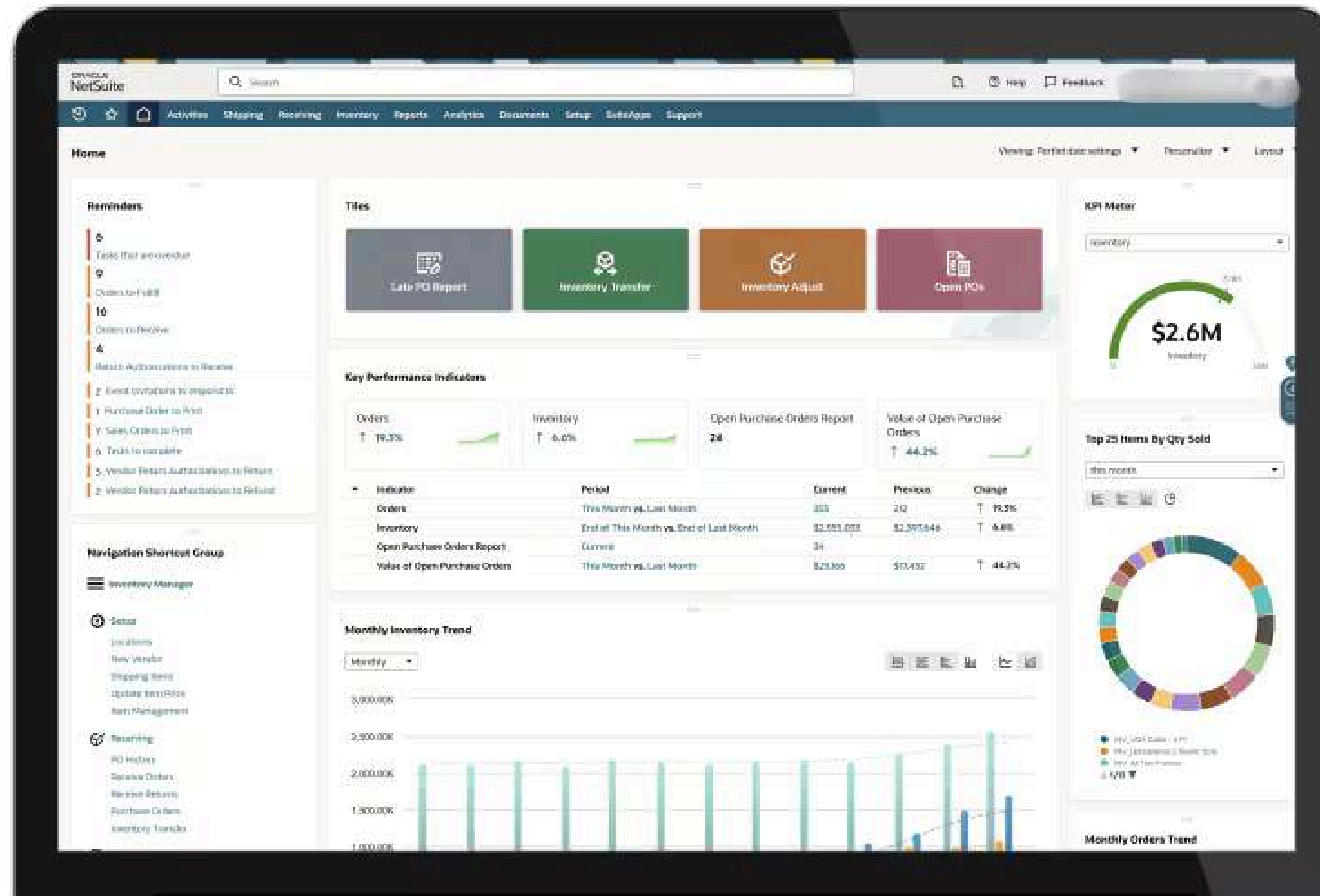


# GLOBAL BUSINESS MANAGEMENT



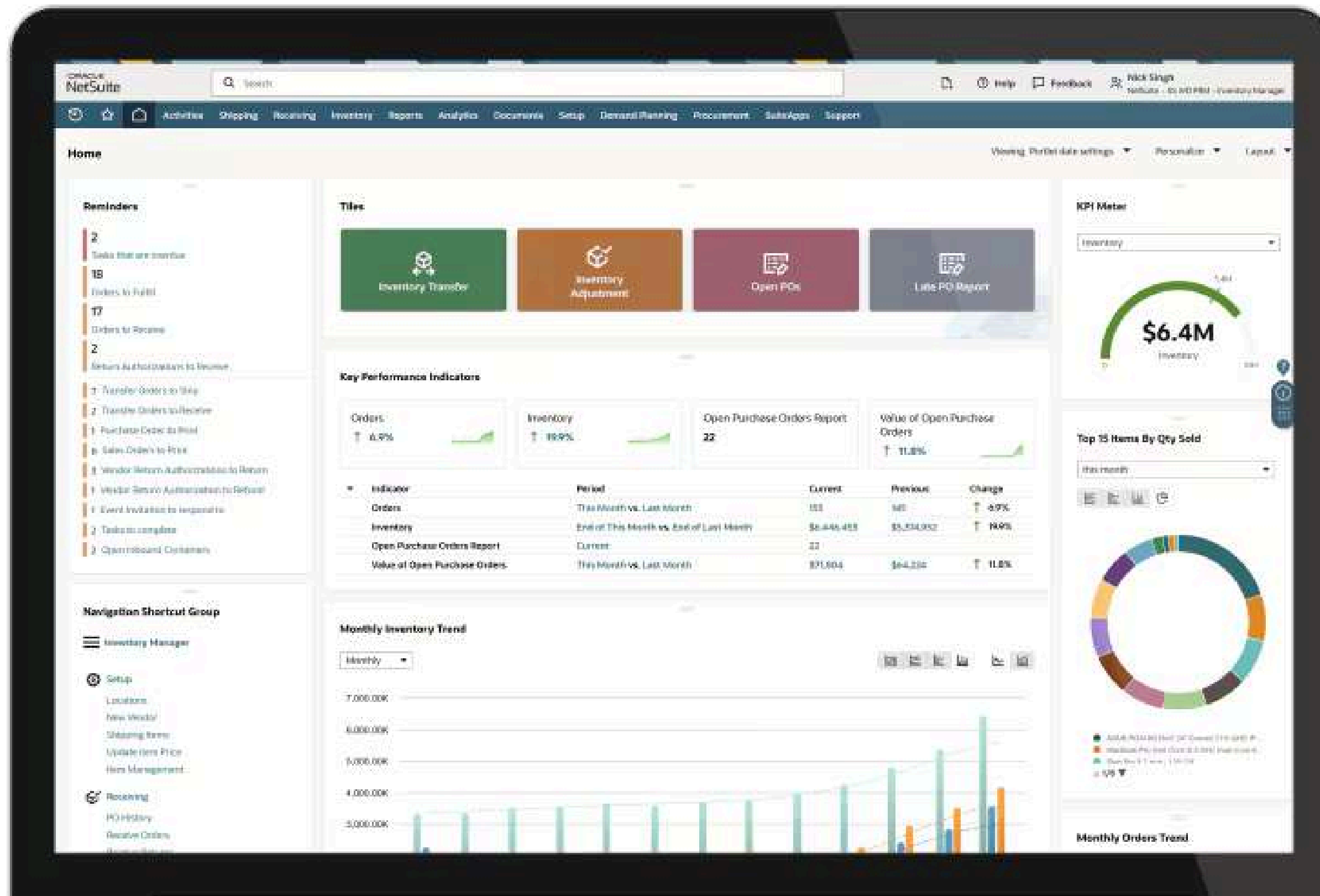


# INVENTORY MANAGEMENT





# ORDER MANAGEMENT





# SUPPLY CHAIN MANAGEMENT

NetSuite

Search

Home

Feedback

Activities

Advanced Manufacturing

Payments

Transactions

Lists

Reports

Analysis

Documents

Setup

Customization

Commerce

Manufacturing Tools

Real Estate

Guides

Configuration

Global Selling

Projects

Demo Asset

SC Mobile

Supply Chain Snapshot

List

Search

Edit

Back

Refresh

Actions

Primary Information

Item Name/Number

SAF100

Replenishment Method

Master Production Scheduling

Stock Unit

Each (1)

Rate Per

01/15/2025 11:01 AM

Item Pickout Rule

Hybrid/Stock

Future Release Date

06/30/2025

Notes

Supply Chain Snapshot

Item

Current Supply Ch. Snapshot Details

Location

All

Unassigned

None

Customer View

Master Scheduling

Item Name

Simulation

Date

Source Transaction

Supply Qty

Demand Qty

Inventory Pk

Transaction

Current Status

Allocated Supply

Allocated Demand

1

SAF100

2025-01-31 00:00:00.0

Inventory

58

58

LOC INV

Inventory Quantity Available

2

SAF100

2025-01-31 00:00:00.0

Planned Order

1

57

W0000

Work Order In Process

3

SAF100

2025-01-31 00:00:00.0

Planned Order

1

64

W0000

Work Order Released

4

SAF100

2025-01-31 00:00:00.0

Transaction

1

45

W0000

Work Order Released

5

SAF100

2025-01-31 00:00:00.0

Planned Order

1

60

W0000

Work Order Released

6

SAF100

2025-01-31 00:00:00.0

Planned Order

1

77

W0000

Work Order In Process

7

SAF100

2025-01-31 00:00:00.0

Planned Order

1

78

W0000

Work Order Released

8

SAF100

2025-01-31 00:00:00.0

Planned Order

1

88

W0000

Work Order Released

9

SAF100

2025-01-31 00:00:00.0

Transaction

1

87

W0000

Work Order Pending Fulfillment

10

SAF100

2025-01-31 00:00:00.0

Transaction

1

88

W0000

Work Order Pending Fulfillment

11

SAF100

2025-01-31 00:00:00.0

Transaction

1

89

W0000

Work Order Pending Fulfillment

Report PAB

Demand

Supply

Edit

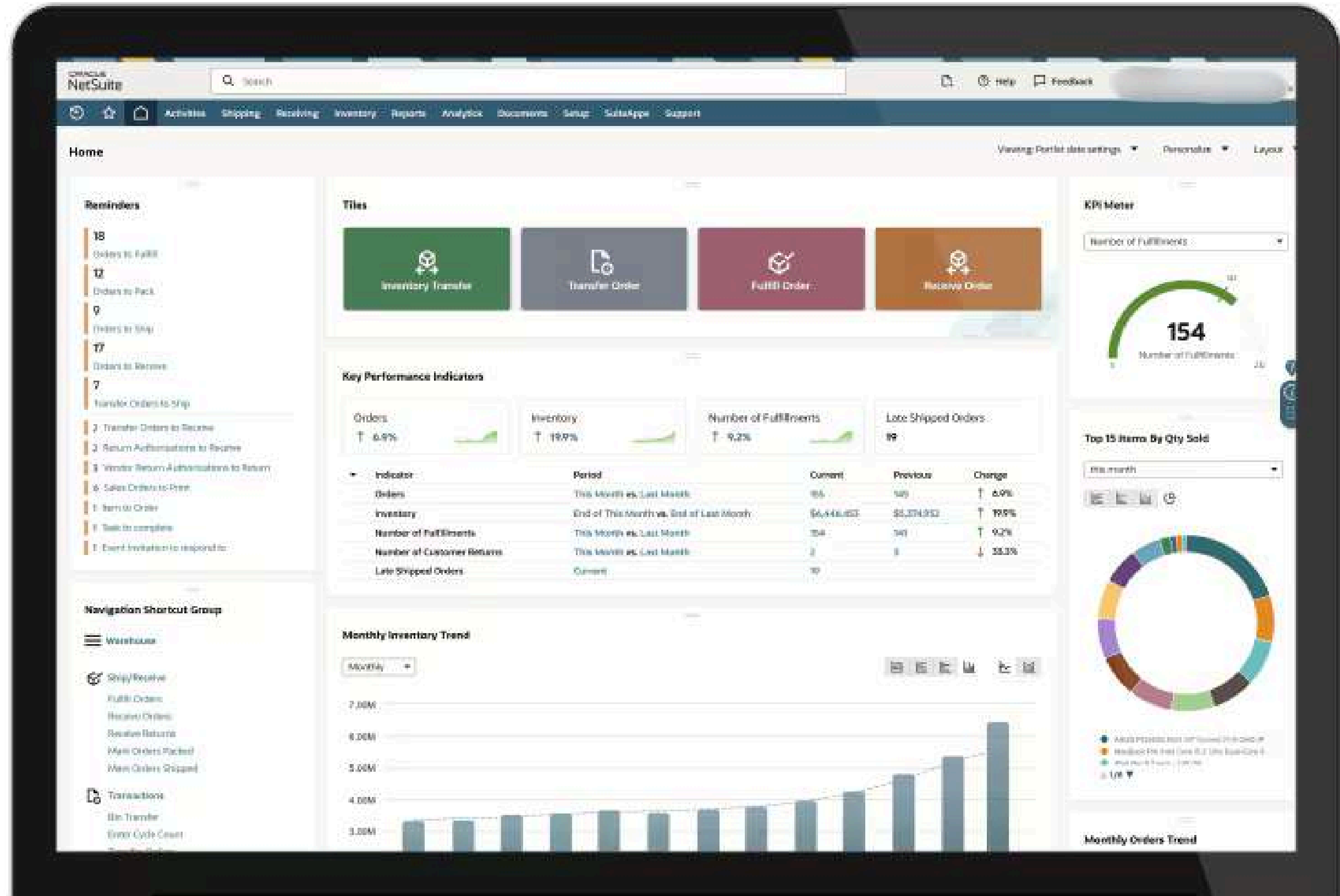
Back

Refresh

Actions



# WAREHOUSE MANAGEMENT





# PROCUREMENT

